

**SHALBY**  
Sanar INTERNATIONAL HOSPITALS

**+91-124-3528444**

Golf Course Road, DLF Phase-5  
Sector - 53, Haryana - 122002

[www.sanarhospitals.com](http://www.sanarhospitals.com)  
[info@sanarhospitals.com](mailto:info@sanarhospitals.com)

Follow us on: [!\[\]\(d66ff64371a51729ac8c1cdaa685ba6f\_img.jpg\)](#) [!\[\]\(0f31ebba7abcd47777e178db26f29705\_img.jpg\)](#) [!\[\]\(63ea948177b1bcc486b2b76d20d5fb69\_img.jpg\)](#) [!\[\]\(886f7dced1265a6d438eca0881817b40\_img.jpg\)](#) [!\[\]\(bb381b56be27580041e232a6cbb04464\_img.jpg\)](#)



**Department of  
Cancer Care**

---



## Introduction

The Department of Cancer Care at SHALBY Sanar International Hospitals, one of the fastest growing super speciality hospitals in the country, is a flagship unit providing personalised care with a patient-centric multidisciplinary approach. A team of highly qualified Medical Oncologist, Surgical Oncologist, Onco Pathologist, Radiologist and other allied specialists work seamlessly to ensure that the entire medical needs of the patients are handled meticulously. This 'Combined Management' approach helps us optimise patient care to a highly personalised level. We are best known for our cutting-edge Cancer treatment modalities and take pride in the compassion and dedication of our doctors, nurses and other healthcare experts.

## Cancer Care with an Innovative Tri-Fold Approach

We have an all-inclusive tri-fold Cancer prevention and treatment programme based on the principle of 'Precision Oncology', providing patient-focussed treatment aligned with standard medical protocols. The hospital constantly invests in state-of-the-art technologies (CT, MRI and ICU) and techniques proven to improve Cancer diagnosis and treatment, ensuring patients can receive the best possible care.

The hospital strictly adheres to international treatment guidelines while offering result-oriented medical care plans for treating Cancer. A multidisciplinary tumour board consisting of specialist doctors and healthcare experts thoroughly evaluate each case and recommend an evidence-based treatment plan.

Cancer patients present different symptoms, so personalised treatment approaches are exercised as per the patients' need. Before administering any treatment, the cancer patient is assessed for physical, nutritional, psychosocial ability and performance status – based on these parameters, the



team of Cancer specialists (Surgical / Medical / Radiation) at the hospital work in synergy to plan and provide a holistic treatment plan for the patient.

To ensure that Cancer patients recover speedily with negligible side effects, surgeries and treatments are directed accurately to the affected area with minimum damage to the surrounding areas, through ultra-modern procedures, such as:

- Minimally Invasive Cancer Surgery
- Immunotherapy
- Targeted Therapy
- Novel Chemotherapy
- Radiation Therapy
- Next Generation Sequencing

## Our Department

The Department of Cancer Care at SHALBY Sanar International Hospitals follows a holistic approach to prevent and cure Cancer by collaborating state-of-the-art technology and facilities with the latest invention in patient-focussed treatment systems in a compassionate environment. The Department brings world-class clinicians into practice on the most critical matters in Cancer Care, wherein Surgical Oncologists work along with Radiologists, Medical Oncologists and Reconstructive Micro Vascular Surgeons to make sure that the most effective treatment is provided to the patient.

The Department constantly invests in latest technologies that have been proven to improve Cancer diagnosis and treatment, making sure that the patients have the opportunity to receive the best



possible care. Patients have access to the expertise of our specialists, many of whom are well recognised and competent professionals in their fields.

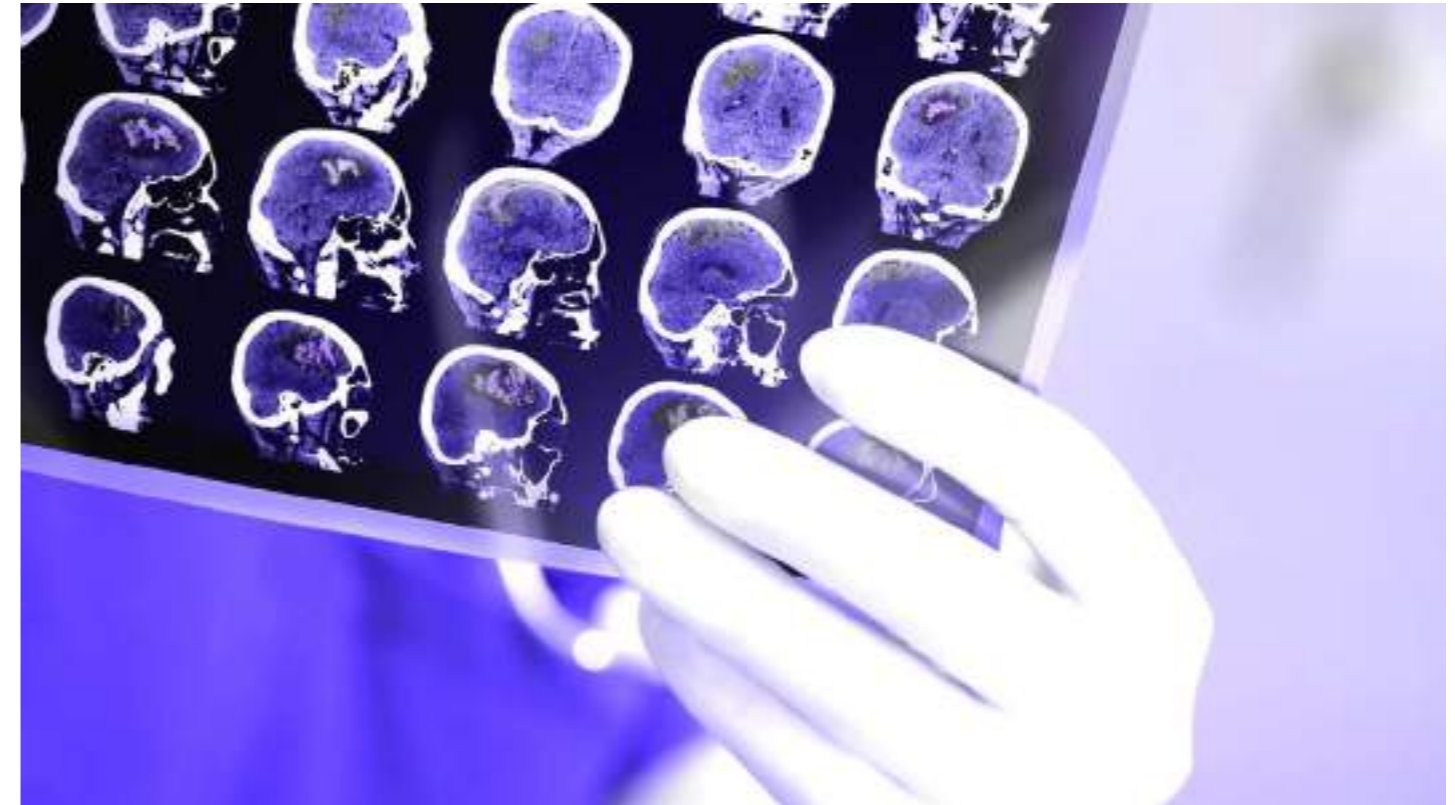
The Department of Cancer Care covers:

- Comprehensive Patient Care
- State-of-the-art Facilities (CT, MRI and ICU)
- World-class Infrastructure
- Leading-edge Technology
- Advanced Professional Training
- Support to Local Community

## Our Specialisations

The Department of Cancer Care at SHALBY Sanar International Hospitals provides extensive interdisciplinary care to Cancer patients. The various types of Cancer Care specialisations and treatment modalities we provide, include:

- Head and Neck Cancer
- Breast Cancer
- Thoracic Cancer & Esophageal Cancer, HITHOC
- Hepato-pancreato-biliary (HPB) Surgery
- Gynaecological Cancer, CRS, HIPEC
- Uro Oncology
- Sarcoma and Bone Tumours
- Cancer Reconstructive Surgery & Plastic Surgery
- Immunotherapy



- Targeted Therapy
- Chemotherapy
- Personalised Cancer Medicine
- Radiation Oncology
- Paediatric Oncology
- Preventive Oncology
- Cancer Survivorship Initiative
- Genetic Counselling

The Department takes into account every detail like natural lighting throughout the hospital, in-room facilities for the family members while the patient receives treatment. In addition, a variety of services and support staff are available to help the patient cope with emotional, physical or social challenges that they may face during the treatment.

## Head and Neck Cancer

Head and Neck Oncology deals with various endoscopic procedures, major and minor resections, organ preservation surgeries, as well as complex reconstructions, including free flaps. SHALBY Sanar International Hospitals' Head and Neck Cancer Care aims to maximise the comfort of the patient by minimising the impact of Cancer and helping them cope with the side effects of intervention.

### Highlights:

- Head and Neck Cancer treatment focusses on preserving function, best cosmetic outcomes and achieving cure by personalised approach.



- Minimally Invasive Surgery wherever possible, for e.g., Endoscopic Laser Laryngeal Surgery.
- Advanced Radiation Therapy and Chemo-Radiation approaches that limit toxicity and improves results.
- Skull Base Surgery, Endoscopic or open, in conjunction with highly experienced teams that work together closely with Neurosurgeons and Radiation Oncologists.
- State-of-the-art Reconstructive Surgery and Rehabilitation Programme to minimise the morbidity of treatment.
- Intra-operative irradiation for highly (selected) recurrent tumours.
- Immunotherapy
- Targeted Therapy
- Chemotherapy

## Breast Cancer

We have a highly skilled and experienced team to handle all kinds of Breast Surgeries, including Radical Resections, Breast Conservations, a variety of Breast Reconstructions as well as Sentinel Lymph Node Techniques. Breast Cancer is a leading malignancy among women, 1 out of 8 women are diagnosed with this ailment worldwide. It is essential to choose the right Cancer Care treatment from the beginning, as it can make a tremendous difference in the outcome.

We have adopted a collective multi-team care for each patient by acclaimed experts working together in a consolidated strategy.



### Our higher-grade diagnostic capabilities include:

- Sentinel Lymph Node Biopsy (SLNB) using Gamma Probe
- Digital Mammography, Breast Ultrasound, 3T Breast MRI, Image-guided Breast Core Biopsy, PET / CT, Sophisticated Interventional Radiology Procedures (Wire Localisation) and Stereotactic Biopsy

### Advanced treatment options

- Skin Sparing Mastectomy which retains most of the normal skin of the breast with Breast Reconstruction procedures surpassing Breast Implants or Conventional Tissue Flaps
- Single Dose Intra-Operative Radiation Therapy (IORT) and 3D Conformal Partial Breast Irradiation (CPBI) which can reduce the duration of radiation treatment
- Breast Conservation Surgery and Oncoplasty for Complex Primary Tumours
- Survivorship Initiative for the patients and their family members
- Immunotherapy
- Targeted Therapy
- Chemotherapy
- Hormonal Therapy

## Thoracic Cancer & Oesophageal Cancer, HITHOC

Our Thoracic & Oesophageal Cancer team has a broad experience in treating both early stage as well as complex cases of Lung Cancer. Our team of specialists uses state-of-the-art diagnostic modalities like VATS / Mediastinoscopy for quick assessment of Cancer. With pioneering knowledge about the genetic make-up of tumour types, our team can provide an individualised treatment plan to match the patient's needs and offer the greatest chance of cure with minimal risks.



#### Our Surgical Oncology Team has specialised experience in handling:

- Video-Assisted Thoracoscopic Surgery (VATS)
- Laparoscopic Oesophageal Cancer Resection
- Complex Chest Wall Resection
- Mediastinal and Superior Sulcus Tumours
- Incorporating Radical CT + RT and complex reconstructive approaches
- Complex Lung Resection
- Tracheal Resection
- Sleeve Lobectomies
- Diaphragm Resection
- Immunotherapy
- Targeted Therapy
- Chemotherapy

In addition to radical surgery, Hyperthermic Intrathoracic Chemotherapy (HITHOC) has been used for primary and secondary pleural malignancies to improve local control, prolong survival and enhance quality of life.

## Laparoscopic or Minimally Invasive Surgery

Our internationally recognised Laparoscopic or Minimally Invasive surgery team is skilled in performing various surgical procedures and have delivered numerous positive outcomes even in the most complex cases. Laparoscopic or Minimally Invasive Cancer Surgery provides an outcome identical to the open procedure but with less surgical complications and shorter post-operative recovery time.



In Laparoscopic or Minimally Invasive Cancer Surgery, tiny incisions of 4-5 mm are made on the abdominal region of the patient. A high magnification camera is inserted through one of the incisions and the surgery is carried out through these small incisions. The surgery provides highest level of precision, because of the magnification. The tumour is removed from the body after the surgical process through one of the small incisions. This procedure results in less pain to the patient, speedy recovery and lesser blood loss.

## Cytoreductive Surgery and HIPEC Technology

The Department of Cancer Care at SHALBY Sanar International Hospitals is amongst the few units in India to offer Cytoreductive Surgery and HIPEC (Hyperthermic Intraperitoneal Chemotherapy) procedure for treatment of Cancers that have originated in or spread to the abdominal cavity. As a part of this care plan, we offer treatment for various diseases such as: Pseudomyxoma Peritonei, Mesothelioma, Colon and Rectal Cancer, Appendiceal Cancer, Gastric Cancer, Ovarian Cancer and Primary Peritoneal Cancer.

#### Highlights:

- Improved drug absorption with minimal exposure to rest of the body
- Minimum side effects of Chemotherapy
- HIPEC procedure, when combined with Cytoreductive surgery, is an effective therapy for appropriately selected patients with improved survival outcomes
- Provides hope of prolonged survival and possible cure for select patients of Pseudomyxoma Peritonei from Mucinous Tumours of Appendix, Peritoneal spread of Colorectal Cancer, Peritoneal Mesothelioma Ovarian Cancer and Malignant Ascites



## Hepato-Pancreato-Biliary (HPB) Surgery & GI Surgery

Hepato-Pancreato-Biliary (HPB) Surgery and GI Surgery deals with a range of surgeries including Oesophagectomies, Gastric and Liver Resections, Colectomies, Radical Pancreatic Surgeries, etc. With an unparalleled depth of knowledge, access to innovative research and technology, combined with a caring and compassionate approach, our doctors are able to provide each patient with a comprehensive, multi-speciality evaluation and a personalised path to the most effective treatment. We have an extensive treatment expertise for patients with all forms of Gastrointestinal Cancers.

## Gynaecological Cancer, Cytoreductive Surgery & HIPEC

We offer expert treatment to patients with various types of Gynaecological Cancers. Our doctors have an extensive experience in managing even the most complicated cases. Our dedicated team of Gynae-Onco Surgeons and Medical Oncologists provide solutions for:

- Ovarian Cancer
- Cervical Cancer
- Endometrial Cancer
- Any other Cancers of the reproductive system

Our goal has always been to deliver the most advanced therapies and best possible care while focussing on improving the patients' quality of life. The team of doctors employ various treatment options and modalities, which include:



- Minimally Invasive procedures such as Laparoscopic, Keyhole / Seamless Cancer Surgeries
- Management of suspicious pelvic masses
- Cervical Cancer Screening & Vaccination
- Care for HPV (Human Papillomavirus)
- Immunotherapy
- Targeted Therapy
- Chemotherapy
- Ovarian and Endometrial Cancer Screening
- Hyperthermic Intraperitoneal Chemotherapy (HIPEC) Procedure

## Uro Oncology

Our team routinely performs advanced open Urology Cancer Surgeries

### Our integrated Cancer treatment includes:

- State-of-the-art surgical techniques to address Metastatic Tumours
- Advanced Minimally Invasive Surgery
- Fertility Conserving Surgery and Advanced Assisted Reproductive Technology
- Immunotherapy
- Targeted Therapy
- Chemotherapy



## Sarcoma and Bone Tumour

Our Specialists are dedicated to treating even the most complex cases, using cutting-edge tools and techniques to identify and treat Bone Cancers such as Soft Tissue Sarcomas, Osteosarcoma, Ewing's Sarcoma and Chondrosarcoma etc. with limb salvage surgery, using customised modular bone and joint prosthesis and even biological grafts.

Apart from Cancer treatment, our specialists in Physiotherapy, Occupational Therapy and Prosthetics, address 'quality of life' issues of our patients to completely support them at each step of the way.

## Cancer Reconstructive Surgery & Plastic Surgery

Reconstructive and Plastic Surgery are important components of comprehensive Cancer Care treatment and are often an important step for patients to regain normal function after Cancer-related treatments. Although, the primary goal of Cancer treatment is to restore physical functionality, most of the times it leads to a loss of function or a deformity.

Our Reconstructive Surgery & Plastic Surgery team specialises in correcting deformities and restoring normal function after Cancer-related treatments. Our clinical faculty is expert in state-of-the-art microvascular surgical techniques to achieve the best possible outcomes pertaining to defects in the head, neck, breast, torso and other extremities.

It also includes complex Reconstructive Microsurgeries involving sarcomas for limb preservation.



## Medical Oncology

We have a team of fully trained Medical Oncologists with rich experience in managing all types of Cancers, providing the following treatment modalities, aptly backed by high-end technology and equipment:

- Chemotherapy
- Immunotherapy
- Targeted Therapy
- Interventional Vascular Access

We also offer OPD, Emergency, Day Care and Video Consultation Services. The OPD services are designed on an organ specific approach where each patient is evaluated by an expert Oncologist. The OPD services guarantee a minimum lag period between registration, consultation and runs 6 days a week.

The Department is backed by round-the-clock, fully equipped emergency services and critical care unit to handle oncological emergencies.

## HITHOC (Hyperthermic Intrathoracic Chemotherapy)

In addition to Radical Surgery, Hyperthermic Intrathoracic Chemotherapy (HITHOC) has been used for primary and secondary pleural malignancies to improve local control, prolong survival rate and enhance quality of life. The common tumours treated with this modality are Malignant Pleural Mesothelioma, Pleural Metastases from Thymoma and Thymic Carcinoma, occasionally metastases from Lung, Ovarian Cancer and Pseudomyxoma Peritonei.



## Radiation Oncology

We offer our patients one of the most advanced Radiotherapy techniques available in India. With these techniques, it is possible to treat the tumour and keep the radiation dose to the surrounding healthy tissues to the minimum. This leads to high cure rates with minimal complications. With a well-qualified team of professionals, including Radiation Oncologists, Medical Physicists and Technologists, the Department is well supported by a team of specialists who are experts in delivering these highly precise techniques.

## Paediatric Oncology

We offer Comprehensive Paediatric Cancer Care, spanning Paediatric Oncology, Haematology, Immunology, Blood and Marrow Transplant, all under one roof. Our team of doctors are internationally trained experts, treating a range of diseases pertaining to Haematology, Oncology and Immunology. We have one of the fastest growing Blood & Marrow Transplant units in India, offering autologous and allogeneic transplants.

## Preventive Oncology

As a part of our Preventive Oncology Care, we have conducted several workshops, health talks, cancer screening camps to raise awareness and educate people on the importance of regular preventive check-ups to detect Cancer at an early stage for better treatment outcomes.

## Genetic Counselling

We offer Genetic Counselling to educate people about Familial Cancers. Our counsellors will provide you with assistance and information on all Hereditary Cancers. We provide clear options for medical or surgical interventions, giving high risk Cancer families an opportunity to enhance their quality of life. Depending on the genetic test results, our Genetic Oncology Specialist will offer personalised treatment options.

## Cancer Survivorship Initiative

We understand that Cancer treatment doesn't end with the completion of intensive therapy. Some Cancer - related issues can continue for years after the treatment.

That's why our Cancer Survivorship Initiative is more than just about surviving Cancer. It starts from the time of diagnosis and continues well after the treatment is over and includes the patient as well as their family, friends and caregivers.

Today, more people are surviving Cancer than ever before, thanks to advances in detection, diagnosis, treatment and follow-up in Cancer care. The need for long-term follow-up care has grown to address the ongoing issues with Cancer and its treatment.

We offer methods to maintain and promote health during the transition from Cancer treatment to wellness and work in conjunction with Oncologists and other experts to provide the best possible care even after the completion of treatment.

### Some of the Post-Treatment services available to our patients include:

- Customised Nutrition Plan
- Palliative Care in Cancer
- Cancer Supportive Care
- Psycho-Social Counselling for patients and their family members